



AUTOMOTIVE

# **Precision Photo Chemical Etching**



## World class chemical etching

Photofab offer a full manufacturing solution for all your metal product needs. Established in 1968 and having produced over 70,000 different components, we have a wealth of knowledge and experience to offer our customers, ensuring they get the best possible solution for their needs.

We have extensive experience in working with some of the most forward-thinking businesses and industry sectors, so we understand that your industry is constantly evolving. The latest capabilities and the right technical knowledge are the bedrock of our business, aimed at helping to bring innovative products to both UK and international markets, that sit at the cutting edge of technological development.

Substantial investment in both the best people and the latest technology ensures that demanding industry requirements are both understood and alleviated. The highest quality standards are met by manufacturing fully traceable, high quality components in complete confidentiality and with full process control.

Photofab also offer the highest levels of customer service, with a dedicated account manager to help, support and manage your project throughout the entire process.



*"Customer service is at the heart of everything we do. We have invested in our people, machinery and processes to ensure we provide a world class customer service."*

**Neil Shorten**  
Managing Director







Photofab have invested heavily in the future in both equipment and staff. Increased capacity provides reduced lead times for customers and improved technology produces high and more consistent quality.

The company also invests strongly in its employees having adopted the Investors in People standard, recognizing that high quality service and productivity come from well trained and motivated personnel.

## The benefits



### 24hr Rapid Turnaround

Delivering your quotes within 24 hours supported by our rapid product turnaround and delivery.



### Customer service

Dedicated account managers



### Precision

Tight tolerances and fine apertures



### Accredited

ISO9001, ISO14001, ISO45001 & SC21



### Reliability

Committed to achieving 98.5% OTD



### Traceability

Full supply & manufacture visibility

# Engine management

Photofab Automotive work with some of the leading designers across the industry.

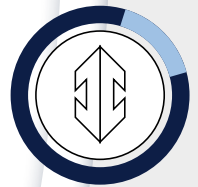
The items we photo etch may not be the most technical elements of the engine design, but the critical benefits provided by photo etching enable other aspects of the design to function. This includes damping shims for fuel injection, spacers and washers for Formula 1 cars, gaskets, flexures and so much more.

# Fuel cell plates

Photofab Automotive work with many leading car manufacturers in the quest for zero emissions through fuel cell plate technology. Photo etching as a process provides the ability to combine fine features, controlled etched channels and high accuracy. The development of fuel cell plates is seen through various applications, from cars and planes through to your domestic boiler. All looking for the same outcome, efficiency. And a competitive advantage over their competitors.

## High or Low Volume

No minimum or maximum quantity, from one to hundreds of thousands



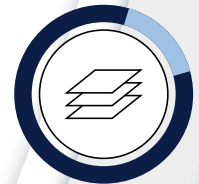
## Rapid Prototyping

Fast turnaround from 24 hours to meet your needs



## Finishing Processes

Various surface finishes available

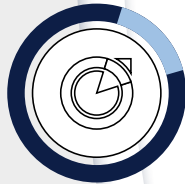




# Speaker grilles

Photofab Automotive work with many of the leading car manufacturers across the globe. The unmatched customer service, combined with the highest quality levels makes Photofab the ideal partner. Sadly, we cannot list all of the prestige clients due to confidentiality agreements, we can assure you that these organisations are at the forefront of car design and production.

Photo etching has been utilised for some time now by automotive OEM's due to the versatility of the process. Not only does it not introduce burrs or stress into the metal, photo etching allows complex mesh patterns to be created whilst simultaneously surface etching (engraving essentially) logos to personalise the grille.



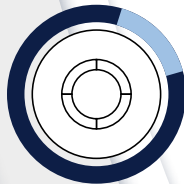
## Customised Parts

You design it - we make it!



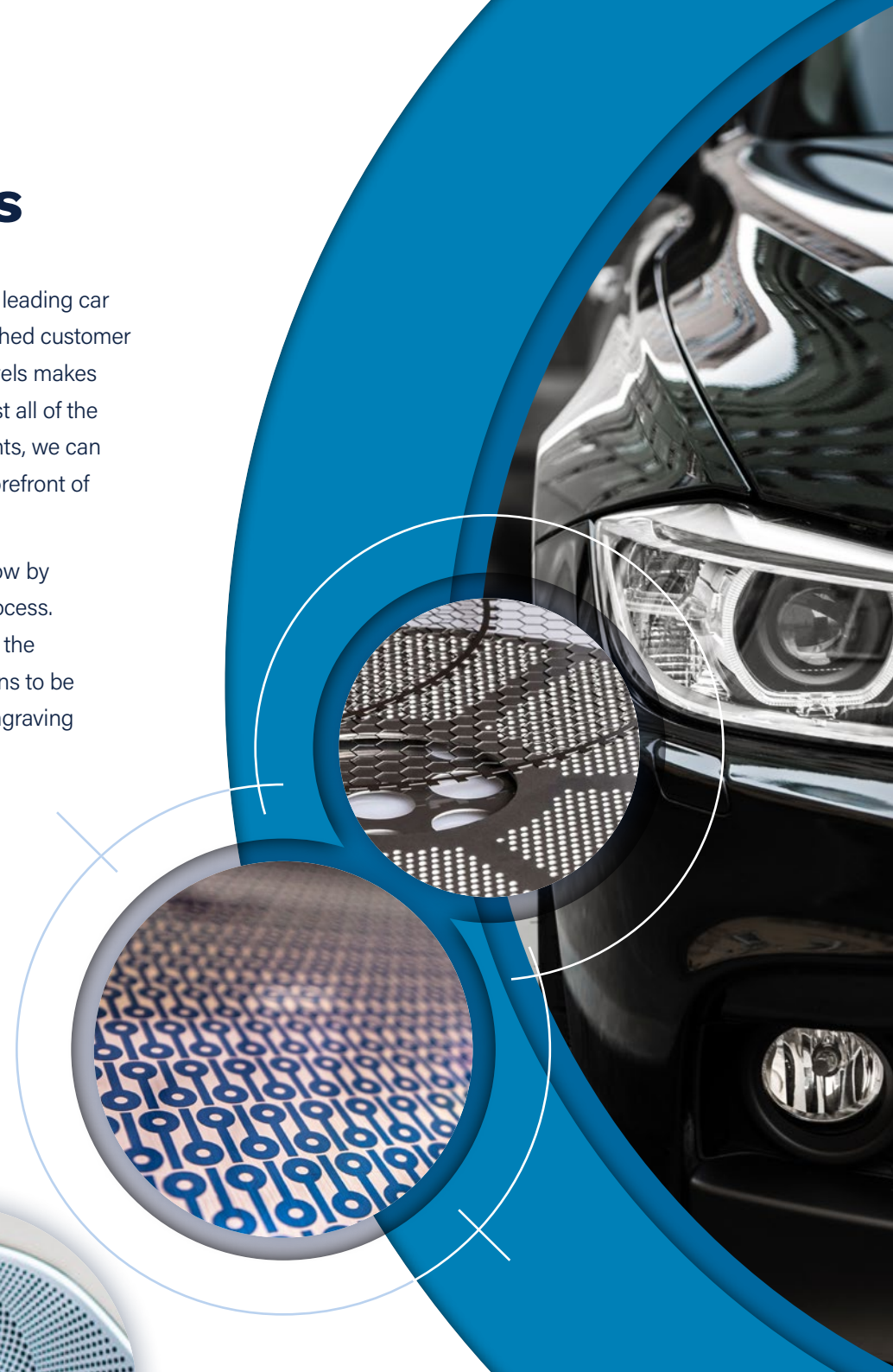
## Burr free & Stress free

Every care and attention is taken to provide a high quality finish



## High Accuracy

From  $\pm 0.025\text{mm}$  and allowing for greater

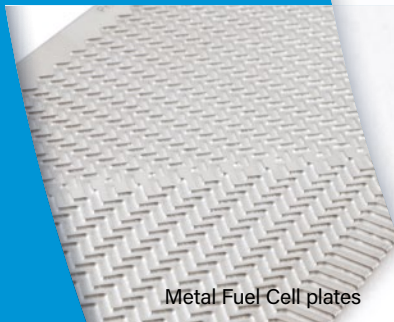


# Products & Services

We are world leaders in the development of photochemical technology to produce intricately shaped components. We have produced over 70,000 different components at the request of our clients over the years. When you work with us, this experience is at your disposal; at all stages of the chemical etching process, our engineers at Photofab will offer advice to improve the product and reduce the costs.

Our knowledge and experience allow us to control the etching speed and produce metal parts with both high accuracy and high quality. We carefully review the component usage to ensure that the correct metal has been selected both from a performance and cost perspective.

Products and Services



Metal Fuel Cell plates



Forming & Toolroom



Formed & Flat Springs



Laser Cutting



Formed Components



Shims & Spacers



Contacts & Connectors



Filters, Meshes, Screens & grids



Plating



Stamping



Gaskets & Seals



RFI Shielding Products



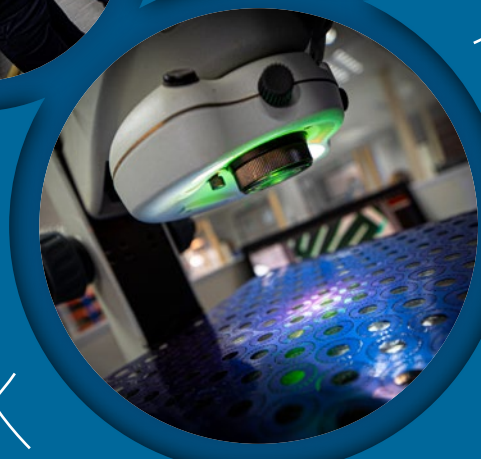
Masks & Stencils







Photofab chemical etching



**Aerospace and Defence**



**Automotive**



**Communications**



**Electronics**



**Life Sciences**



**Medical**



**Optical**



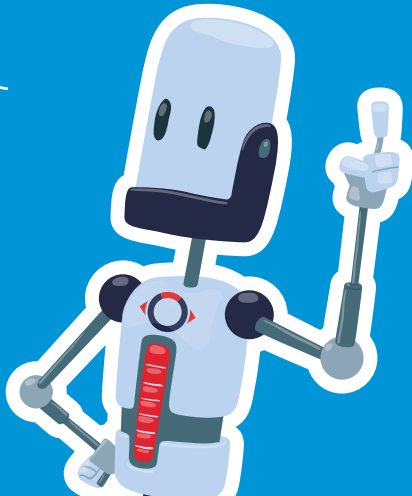
**Product Development**



**Scientific**



**Security**



Photofabrication Ltd,  
14 Cromwell Road, St Neots,  
Cambs, PE19 2HP United Kingdom  
T . +44 (0)1480 226699  
F . +44 (0)1480 475801  
E . [sales@photofab.co.uk](mailto:sales@photofab.co.uk)  
W . [photofab.co.uk](http://photofab.co.uk)

