



COMMUNICATIONS

# Precision Photo Chemical Etching



## World class chemical etching

Photofab offer a full manufacturing solution for all your metal product needs. Established in 1968 and having produced over 70,000 different components, we have a wealth of knowledge and experience to offer our customers, ensuring they get the best possible solution for their needs.

We have extensive experience in working with some of the most forward-thinking businesses and industry sectors, so we understand that your industry is constantly evolving. The latest capabilities and the right technical knowledge are the bedrock of our business, aimed at helping to bring innovative products to both UK and international markets, that sit at the cutting edge of technological development.

Substantial investment in both the best people and the latest technology ensures that demanding industry requirements are both understood and alleviated. The highest quality standards are met by manufacturing fully traceable, high quality components in complete confidentiality and with full process control.

Photofab also offer the highest levels of customer service, with a dedicated account manager to help, support and manage your project throughout the entire process.



*"Customer service is at the heart of everything we do. We have invested in our people, machinery and processes to ensure we provide a world class customer service."*

**Neil Shorten**  
Managing Director







Photofab have invested heavily in the future in both equipment and staff. Increased capacity provides reduced lead times for customers and improved technology produces high and more consistent quality.

The company also invests strongly in its employees having adopted the Investors in People standard, recognizing that high quality service and productivity come from well trained and motivated personnel.

## The benefits



### 24hr Rapid Turnaround

Delivering your quotes within 24 hours supported by our rapid product turnaround and delivery.



### Customer service

Dedicated account managers



### Precision

Tight tolerances and fine apertures



### Accredited

ISO9001, ISO14001, ISO45001 & SC21



### Reliability

Committed to achieving 98.5% OTD



### Traceability

Full supply & manufacture visibility

## Keeping the communications industry connected

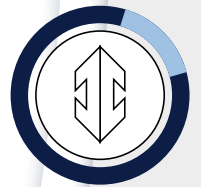
The evolution of communications and the products and devices entering the market has been monumental in recent years. Smarter technology has come to the forefront and started to shape our lives.

Communication equipment has changed beyond recognition in a very short period in time and will change again over the next few years.

Photofab has helped design engineers to develop ever more compact products by working to the highest quality standards to produce precision metal components on very short lead times.

### High or Low Volume

No minimum or maximum quantity, from one to hundreds of thousands



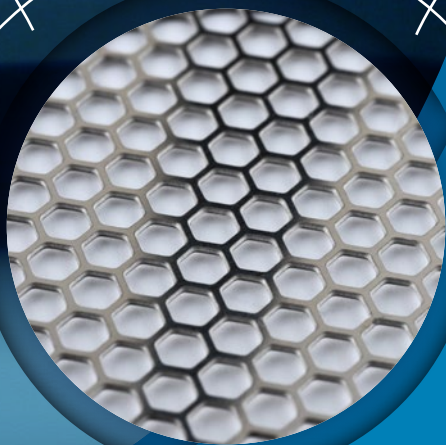
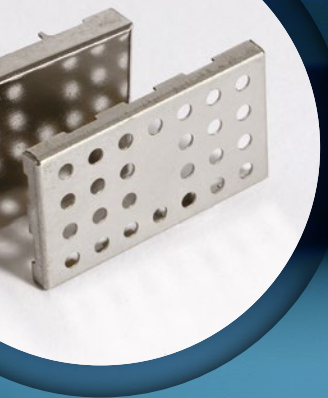
### Rapid Prototyping

Fast turnaround from 24 hours to meet your needs




### Finishing Processes

Various surface finishes available

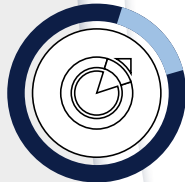






The reason many companies choose Photofab on new communications projects is due to the fact that our engineers and staff listen to the customer's mechanical requirements and understand the service they need. Our engineers will help with product development by offering advice on best manufacturing processes to enable the product to be manufactured economically not only as a concept but more importantly when in production.

Photofab offer the highest level of customer service, including a dedicated account manager, high precision components and industry leading lead times.



### **Customised Parts**

You design it - we make it!



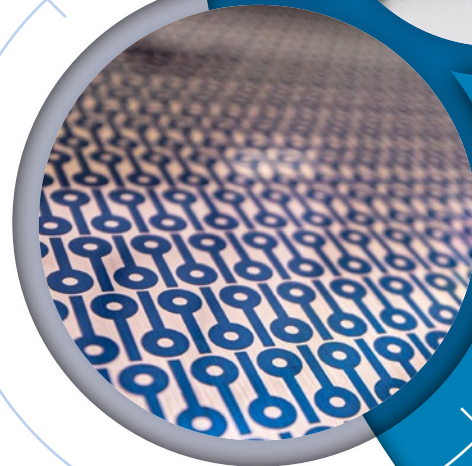
### **Burr free & Stress free**

Every care and attention is taken to provide a high quality finish



### **High Accuracy**

From  $\pm 0.025\text{mm}$  and fine apertures allowing for greater open areas

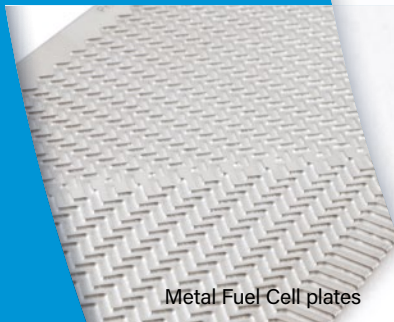


# Products & Services

We are world leaders in the development of photochemical technology to produce intricately shaped components. We have produced over 70,000 different components at the request of our clients over the years. When you work with us, this experience is at your disposal; at all stages of the chemical etching process, our engineers at Photofab will offer advice to improve the product and reduce the costs.

Our knowledge and experience allow us to control the etching speed and produce metal parts with both high accuracy and high quality. We carefully review the component usage to ensure that the correct metal has been selected both from a performance and cost perspective.

Products and Services



Metal Fuel Cell plates



Formed & Flat Springs



Chemical Etching & Milling



Gaskets & Seals



RFI Shielding Products



Laser Cutting



Formed Components



Filters, Meshes, Screens & grids



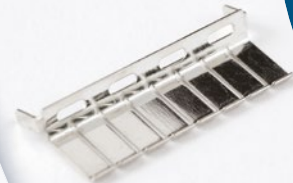
Metal Laminations



Masks & Stencils



Shims & Spacers



Plating



Forming & Toolroom



Encoder Discs & Actuators



Contacts & Connectors

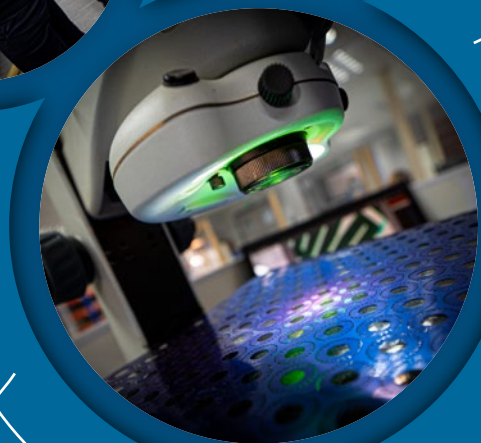


Stamping





Photofab chemical etching



**Aerospace and Defence**



**Automotive**



**Communications**



**Electronics**



**Life Sciences**



**Medical**



**Optical**



**Product Development**

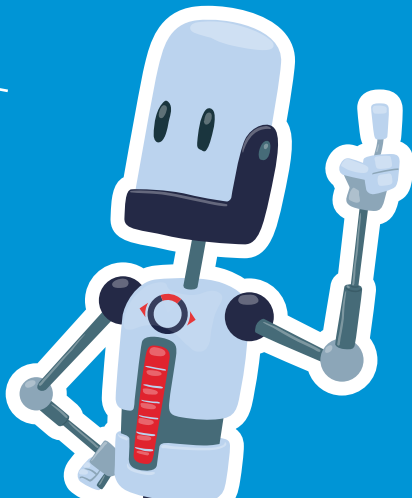


**Scientific**



**Security**





Photofabrication Ltd,  
14 Cromwell Road, St Neots,  
Cambs, PE19 2HP United Kingdom  
T . +44 (0)1480 226699  
F . +44 (0)1480 475801  
E . [sales@photofab.co.uk](mailto:sales@photofab.co.uk)  
W . [photofab.co.uk](http://photofab.co.uk)

