

ELECTRONICS

Precision Photo Chemical Etching



World class chemical etching

Photofab offer a full manufacturing solution for all your metal product needs. Established in 1968 and having produced over 70,000 different components, we have a wealth of knowledge and experience to offer our customers, ensuring they get the best possible solution for their needs.

We have extensive experience in working with some of the most forward-thinking businesses and industry sectors, so we understand that your industry is constantly evolving. The latest capabilities and the right technical knowledge are the bedrock of our business, aimed at helping to bring innovative products to both UK and international markets, that sit at the cutting edge of technological development.

Substantial investment in both the best people and the latest technology ensures that demanding industry requirements are both understood and alleviated. The highest quality standards are met by manufacturing fully traceable, high quality components in complete confidentiality and with full process control.

Photofab also offer the highest levels of customer service, with a dedicated account manager to help, support and manage your project throughout the entire process.



"Customer service is at the heart of everything we do. We have invested in our people, machinery and processes to ensure we provide a world class customer service."

Neil Shorten
Managing Director





Photofab have invested heavily in the future in both equipment and staff. Increased capacity provides reduced lead times for customers and improved technology produces high and more consistent quality.

The company also invests strongly in its employees having adopted the Investors in People standard, recognizing that high quality service and productivity come from well trained and motivated personnel.

The benefits



24hr Rapid Turnaround

Delivering your quotes within 24 hours supported by our rapid product turnaround and delivery.



Customer service

Dedicated account managers



Precision

Tight tolerances and fine apertures



Accredited

ISO9001, ISO14001, ISO45001 & SC21



Reliability

Committed to achieving 98.5% OTD



Traceability

Full supply & manufacture visibility

Making Shockwaves

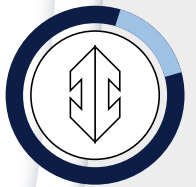
Photofab's capabilities in many markets and industries is what makes us so well renowned as a chemical etching company. Included in these industries are electronics companies, who often require forming, plating, and specific metal grades to suit conductivity.

In today's fast moving technology driven World, 90% of Industry uses Electronics to advance the functionality of their products.

With space and size becoming a premium Electronics are becoming smaller, therefore the requirement for quick precision parts has become more important.

High or Low Volume

No minimum or maximum quantity.
from one to hundreds of thousands



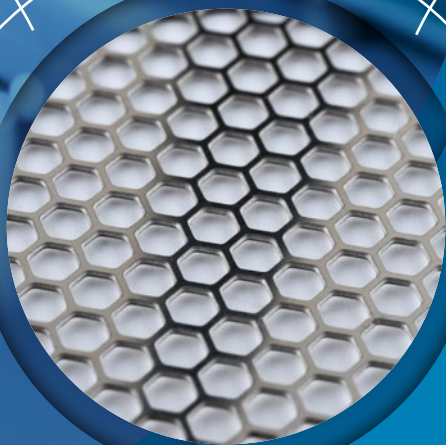
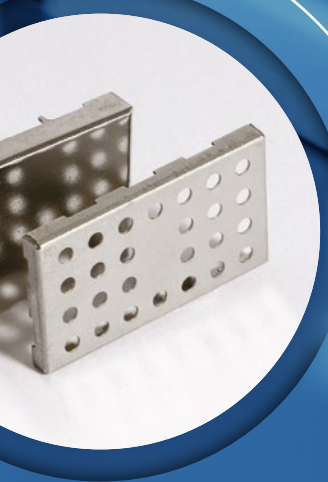
Rapid Prototyping

Fast turnaround from 24 hours
to meet your needs



Finishing Processes

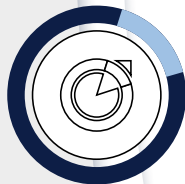
Various surface finishes available



Time to market is one of the most important factors a company has to consider when launching a new product.

Photofab help many leading companies reduce the time from concept to volume production by supplying fully finished, formed, plated and assembled high precision components. Manufactured at very competitive prices from prototypes through to full volume production. This single point of manufacture can be very useful when moving from prototypes to production as full knowledge and understanding of the product requirement is not lost by switching to another supply chain.

Photofab offer the highest level of customer service, including a dedicated account manager, high precision components and industry leading lead times.



Customised Parts

You design it - we make it!



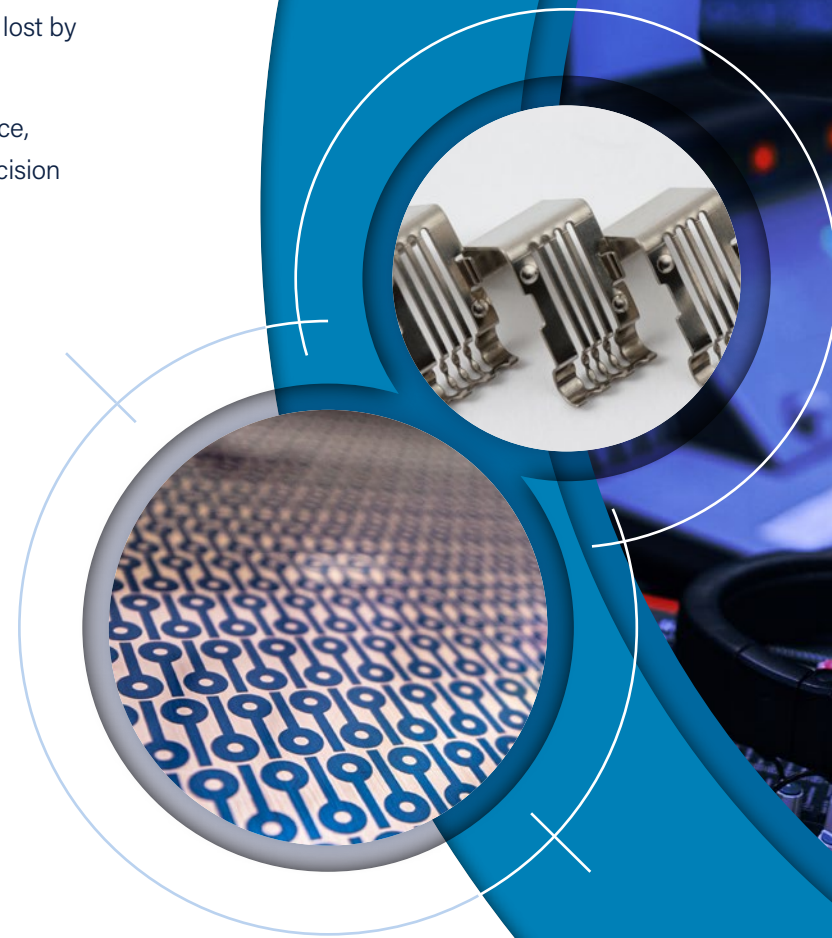
Burr free & Stress free

Every care and attention is taken to provide a high quality finish



High Accuracy

From $\pm 0.025\text{mm}$ and fine apertures allowing for greater open areas

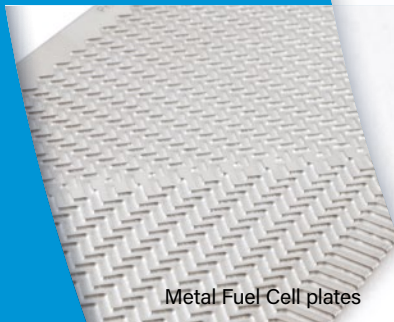


Products & Services

We are world leaders in the development of photochemical technology to produce intricately shaped components. We have produced over 70,000 different components at the request of our clients over the years. When you work with us, this experience is at your disposal; at all stages of the chemical etching process, our engineers at Photofab will offer advice to improve the product and reduce the costs.

Our knowledge and experience allow us to control the etching speed and produce metal parts with both high accuracy and high quality. We carefully review the component usage to ensure that the correct metal has been selected both from a performance and cost perspective.

Products and Services



Metal Fuel Cell plates



Formed & Flat Springs



Chemical Etching & Milling



Gaskets & Seals



RFI Shielding Products



Laser Cutting



Formed Components



Filters, Meshes, Screens & grids



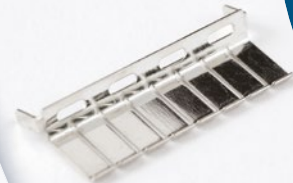
Metal Laminations



Masks & Stencils



Shims & Spacers



Plating



Forming & Toolroom



Encoder Discs & Actuators



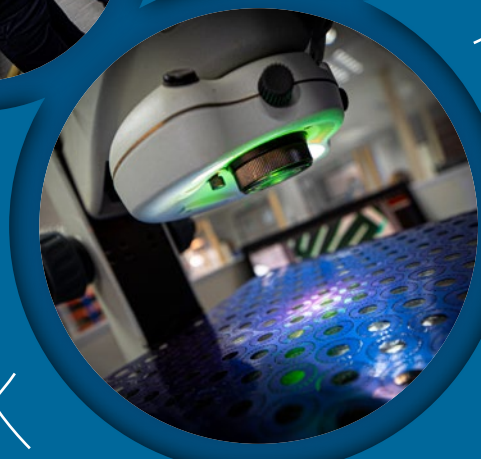
Contacts & Connectors



Stamping



Photofab chemical etching



Aerospace and Defence



Automotive



Communications



Electronics



Life Sciences



Medical



Optical



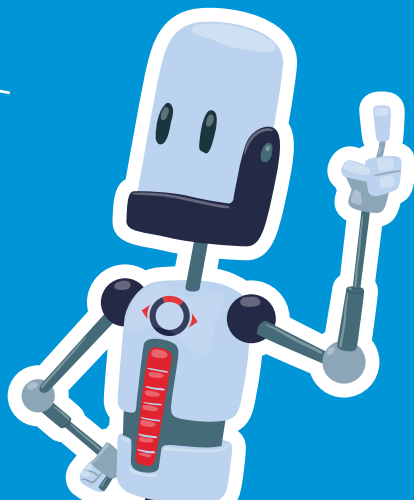
Product Development



Scientific



Security



Photofabrication Ltd,
14 Cromwell Road, St Neots,
Cambs, PE19 2HP United Kingdom
T . +44 (0)1480 226699
F . +44 (0)1480 475801
E . sales@photofab.co.uk
W . photofab.co.uk

