

OPTICAL

Precision Photo Chemical Etching



World class chemical etching

Photofab offer a full manufacturing solution for all your metal product needs. Established in 1968 and having produced over 70,000 different components, we have a wealth of knowledge and experience to offer our customers, ensuring they get the best possible solution for their needs.

We have extensive experience in working with some of the most forward-thinking businesses and industry sectors, so we understand that your industry is constantly evolving. The latest capabilities and the right technical knowledge are the bedrock of our business, aimed at helping to bring innovative products to both UK and international markets, that sit at the cutting edge of technological development.

Substantial investment in both the best people and the latest technology ensures that demanding industry requirements are both understood and alleviated. The highest quality standards are met by manufacturing fully traceable, high quality components in complete confidentiality and with full process control.

Photofab also offer the highest levels of customer service, with a dedicated account manager to help, support and manage your project throughout the entire process.



"Customer service is at the heart of everything we do. We have invested in our people, machinery and processes to ensure we provide a world class customer service."

Neil Shorten
Managing Director





Photofab have invested heavily in the future in both equipment and staff. Increased capacity provides reduced lead times for customers and improved technology produces high and more consistent quality.

The company also invests strongly in its employees having adopted the Investors in People standard, recognizing that high quality service and productivity come from well trained and motivated personnel.

The benefits



24hr Rapid Turnaround

Delivering your quotes within 24 hours supported by our rapid product turnaround and delivery.



Customer service

Dedicated account managers



Precision

Tight tolerances and fine apertures



Accredited

ISO9001, ISO14001, ISO45001 & SC21



Reliability

Committed to achieving 98.5% OTD



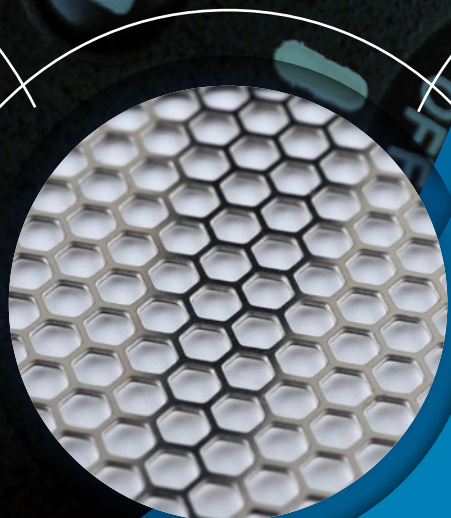
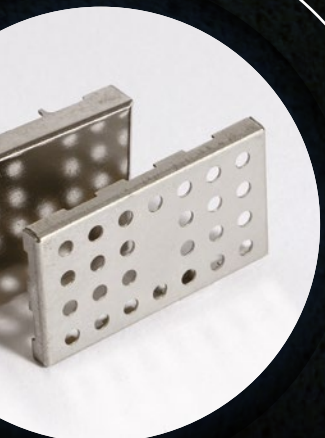
Traceability

Full supply & manufacture visibility

Optical component accuracy

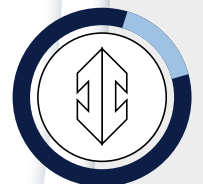
The optical sector can be viewed in a number of ways, the preferred view is to split the sector between the "eye" care element (e.g. contact lens development, laser eye surgery, medical requirements, etc) and the products designed and manufactured for use with the eye (e.g. camera's, encoder disks, motion control, positioning, measurement, etc).

Both elements require high quality levels, traceability of manufacture, fast & reliable lead times, stress & burr free components and full confidentiality.



High or Low Volume

No minimum or maximum quantity.
from one to hundreds of thousands



Rapid Prototyping


Fast turnaround from 24 hours
to meet your needs



Finishing Processes

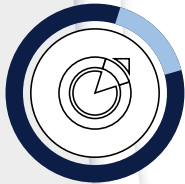
Various surface finishes available





Photofab has invested in the people, technology, and manufacturing processes to provide this capability and has formed a close bond with manufacturers of optical equipment over the years.

Beyond these typical demands, there are services that Photofab has fine-tuned to provide the optical industry with sought-after added value. PX-3 chemical black coating for example gives components a non-reflective overlay to prevent corrosion and reduce light reflection. This is just one of many examples where quality control measures are ensuring customer satisfaction.



Customised Parts

You design it - we make it!



Burr free & Stress free

Every care and attention is taken to provide a high quality finish



High Accuracy

From $\pm 0.025\text{mm}$ and fine apertures allowing for greater open areas

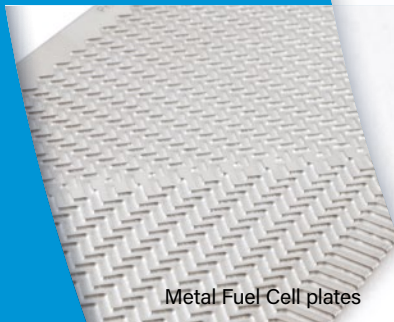


Products & Services

We are world leaders in the development of photochemical technology to produce intricately shaped components. We have produced over 70,000 different components at the request of our clients over the years. When you work with us, this experience is at your disposal; at all stages of the chemical etching process, our engineers at Photofab will offer advice to improve the product and reduce the costs.

Our knowledge and experience allow us to control the etching speed and produce metal parts with both high accuracy and high quality. We carefully review the component usage to ensure that the correct metal has been selected both from a performance and cost perspective.

Products and Services



Metal Fuel Cell plates



Forming & Toolroom



Formed & Flat Springs



Laser Cutting



Formed Components



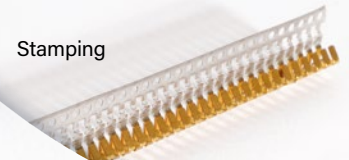
Shims & Spacers



Masks & Stencils



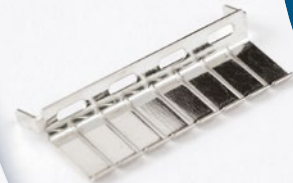
Contacts & Connectors



Stamping



Filters, Meshes, Screens & grids



Plating



Gaskets & Seals



RFI Shielding Products



Metal Laminations



Photofab chemical etching



Aerospace and Defence



Automotive



Communications



Electronics



Life Sciences



Medical



Optical



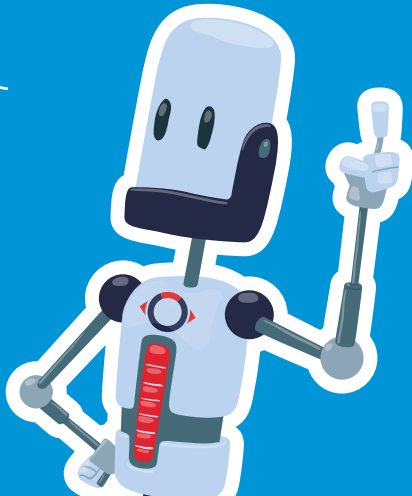
Product Development



Scientific



Security



Photofabrication Ltd,
14 Cromwell Road, St Neots,
Cambs, PE19 2HP United Kingdom
T . +44 (0)1480 226699
F . +44 (0)1480 475801
E . sales@photofab.co.uk
W . photofab.co.uk

