



PRODUCT DEVELOPMENT

Precision Photo Chemical Etching



World class chemical etching

Photofab offer a full manufacturing solution for all your metal product needs. Established in 1968 and having produced over 70,000 different components, we have a wealth of knowledge and experience to offer our customers, ensuring they get the best possible solution for their needs.

We have extensive experience in working with some of the most forward-thinking businesses and industry sectors, so we understand that your industry is constantly evolving. The latest capabilities and the right technical knowledge are the bedrock of our business, aimed at helping to bring innovative products to both UK and international markets, that sit at the cutting edge of technological development.

Substantial investment in both the best people and the latest technology ensures that demanding industry requirements are both understood and alleviated. The highest quality standards are met by manufacturing fully traceable, high quality components in complete confidentiality and with full process control.

Photofab also offer the highest levels of customer service, with a dedicated account manager to help, support and manage your project throughout the entire process.



"Customer service is at the heart of everything we do. We have invested in our people, machinery and processes to ensure we provide a world class customer service."

Neil Shorten
Managing Director





Photofab have invested heavily in the future in both equipment and staff. Increased capacity provides reduced lead times for customers and improved technology produces high and more consistent quality.

The company also invests strongly in its employees having adopted the Investors in People standard, recognizing that high quality service and productivity come from well trained and motivated personnel.

The benefits



24hr Rapid Turnaround

Delivering your quotes within 24 hours supported by our rapid product turnaround and delivery.



Customer service

Dedicated account managers



Precision

Tight tolerances and fine apertures



Accredited

ISO9001, ISO14001, ISO45001 & SC21



Reliability

Committed to achieving 98.5% OTD



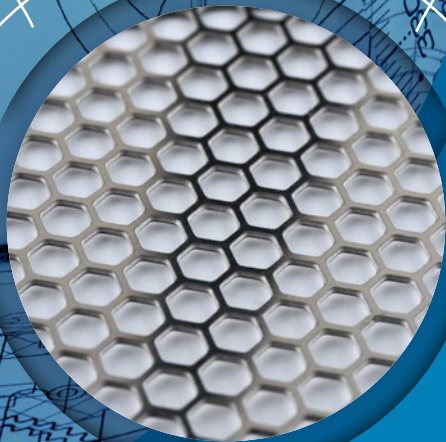
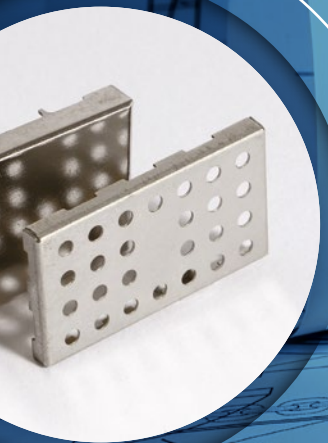
Traceability

Full supply & manufacture visibility

Nail the prototype, ramp up the volume

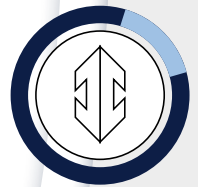
The UK is one of the World leaders in design and development, product development has to move quicker than ever with time to market being one of the most important factors for every OEM. Photofab help leading companies every day to reduce development lead times and costs.

With the use of the Chemical Milling / Photo Etching process and our universal form tooling both piece part and tooling costs can be kept to a minimum allowing small volume development at very low cost.



High or Low Volume

No minimum or maximum quantity,
from one to hundreds of thousands



Rapid Prototyping

Fast turnaround from 24 hours
to meet your needs



Finishing Processes

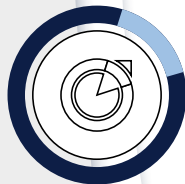
Various surface finishes available



Full traceability of material and process control along with design / customer confidentiality give our customer the confidence to discuss their design requirements in detail.

Photofab offer flat parts in 5 days, with formed parts in 8 days these lead times can often be reduced to help companies on very tight schedules. The Chemical Milling / Photo Etching process allows customers to produce a variety of products of the same material and thickness on the same graphic tool.

Further modifications to the initial design concepts are at reduced costs and very easy to carry out, this eases the development engineers concerns on cost and time when trying to "get the design right first time".



Customised Parts

You design it - we make it!



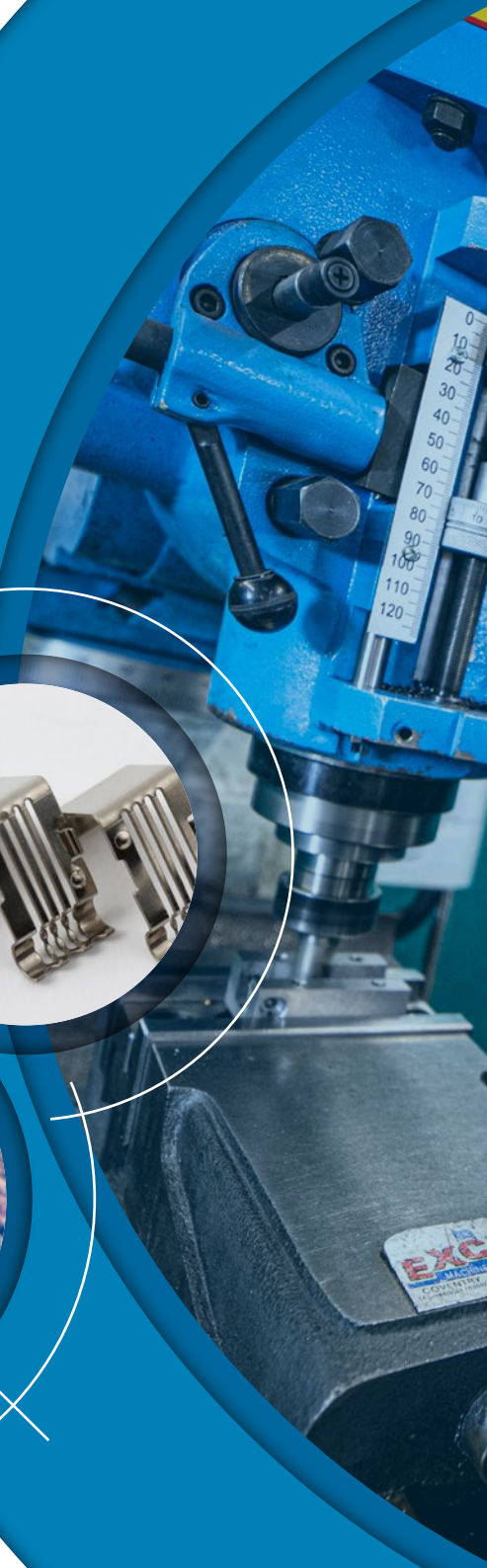
Burr free & Stress free

Every care and attention is taken to provide a high quality finish



High Accuracy

From $\pm 0.025\text{mm}$ and fine apertures allowing for greater open areas

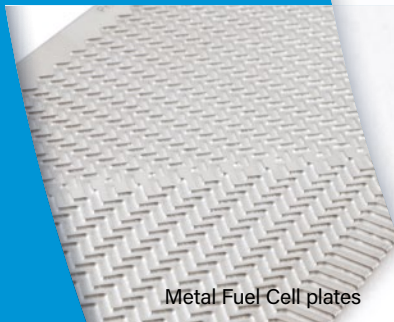


Products & Services

We are world leaders in the development of photochemical technology to produce intricately shaped components. We have produced over 70,000 different components at the request of our clients over the years. When you work with us, this experience is at your disposal; at all stages of the chemical etching process, our engineers at Photofab will offer advice to improve the product and reduce the costs.

Our knowledge and experience allow us to control the etching speed and produce metal parts with both high accuracy and high quality. We carefully review the component usage to ensure that the correct metal has been selected both from a performance and cost perspective.

Products and Services



Metal Fuel Cell plates



Forming & Toolroom



Formed & Flat Springs



Laser Cutting



Chemical Etching & Milling



Gaskets & Seals



RFI Shielding Products



Formed Components



Filters, Meshes, Screens & grids



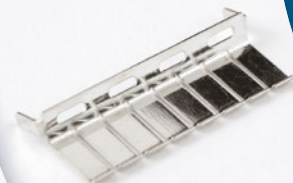
Metal Laminations



Masks & Stencils



Shims & Spacers



Plating



Encoder Discs & Actuators



Contacts & Connectors



Stamping



Photofab chemical etching



Aerospace and Defence



Automotive



Communications



Electronics



Life Sciences



Medical



Optical



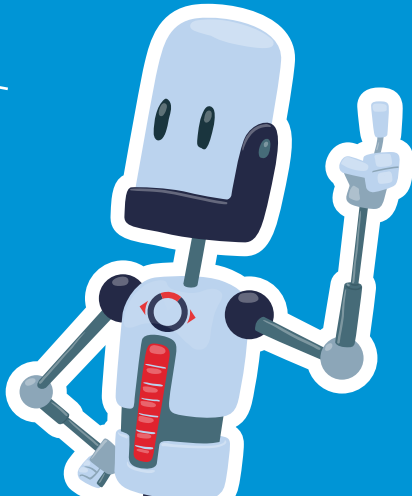
Product Development



Scientific



Security



Photofabrication Ltd,
14 Cromwell Road, St Neots,
Cambs, PE19 2HP United Kingdom
T . +44 (0)1480 226699
F . +44 (0)1480 475801
E . sales@photofab.co.uk
W . photofab.co.uk

