



PRECISION PHOTO CHEMICAL ETCHING

“Customer service is at the heart of everything we do. We have invested in our people, machinery and processes to ensure we provide a world class customer service.”

Neil Shorten
Managing Director



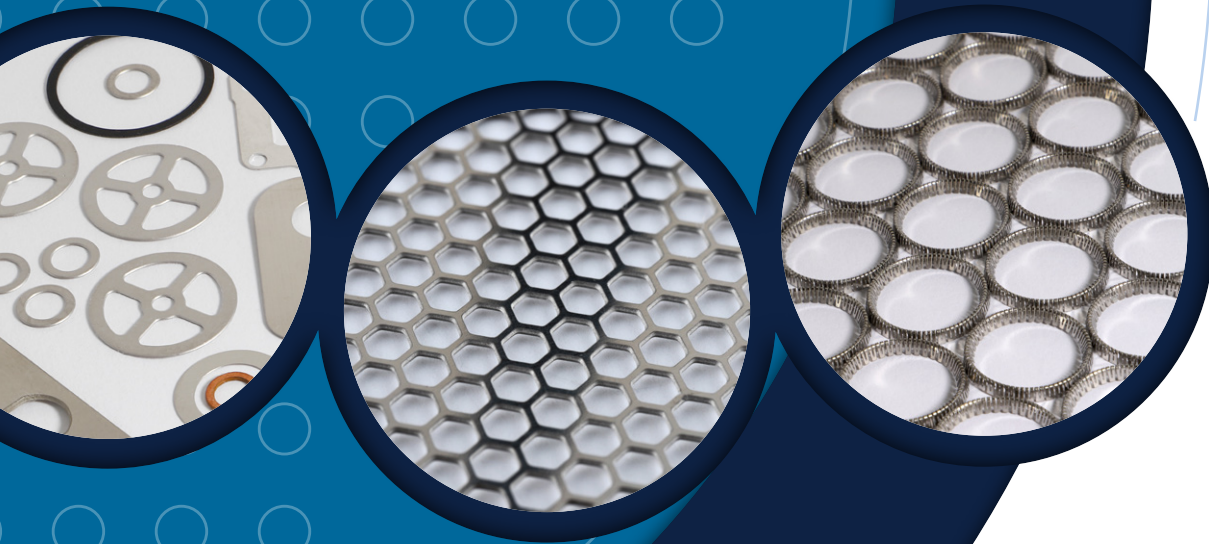
WORLD CLASS CHEMICAL ETCHING

We offer a full manufacturing solution for all your metal product needs. Established in 1968 and having produced over 80,000 different components, we have a wealth of knowledge and experience to offer our customers, ensuring they get the best possible solution for their needs.

We have extensive experience in working with some of the most forward-thinking businesses and industry sectors, so we understand that your industry is constantly evolving. The latest capabilities and the right technical knowledge are the bedrock of our business, aimed at helping to bring innovative products to both UK and international markets, that sit at the cutting edge of technological development.

Substantial investment in both the best people and the latest technology ensures that demanding industry requirements are both understood and alleviated. The highest quality standards are met by manufacturing fully traceable, high quality components in complete confidentiality and with full process control.

We also offer the highest levels of customer service, with a dedicated account manager to help, support and manage your project throughout the entire process.



THE BENEFITS

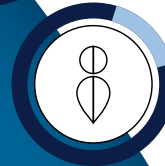


We have invested heavily in the future, both in equipment and processes. The increased capacity allows the team to offer reduced lead times for customers, while improved technology ensures high and consistent quality. Additionally, we have invested strongly in employees; having adopted the Investors in People standard, we recognise that high quality service and productivity come from well trained and motivated personnel.



24HR RAPID TURNAROUND

Delivering your quotes within 24 hours supported by our rapid product turnaround and delivery.



CUSTOMER SERVICE

Dedicated account managers



PRECISION

Tight tolerances and fine apertures



QUALITY ACCREDITED

ISO9001, ISO14001, ISO45001 & SC21



RELIABILITY

Committed to achieving 98.5% OTD



TRACEABILITY

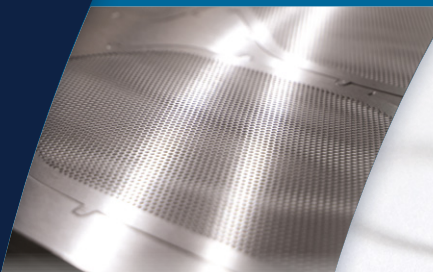
Full supply & manufacture visibility

PRODUCTS & SERVICES

We are world leaders in the development of photochemical technology to produce intricately shaped components. We have produced over 80,000 different components at the request of our clients over the years. When you work with us, this experience is at your disposal, at all stages of the chemical etching process, our engineers will offer advice to improve the product and reduce the costs.

Our knowledge and experience allow us to control the etching speed and produce metal parts with both high accuracy and high quality. We carefully review the component usage to ensure that the correct metal has been selected both from a performance and cost perspective.

Products and Services



Speaker Grilles



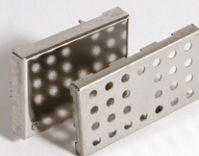
Formed & Flat Springs



Chemical Etching & Milling



Gaskets & Seals



RFI Shielding Products



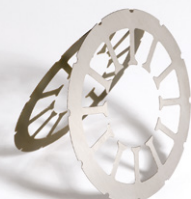
Laser Cutting



Formed Components



Filters, Meshes,
Screens & Grids



Metal Laminations



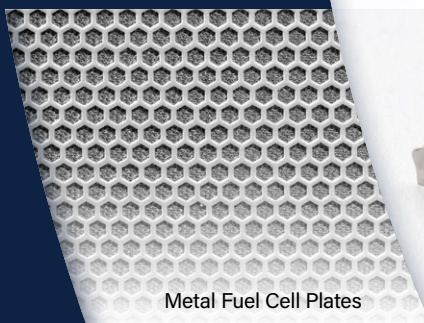
Masks & Stencils



Shims & Spacers



Plating



Metal Fuel Cell Plates



Forming & Toolroom



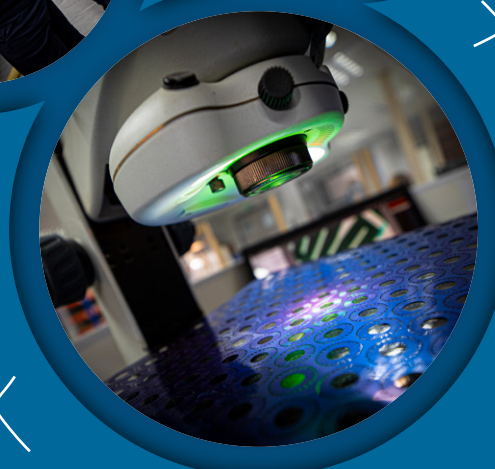
Encoder Discs & Actuators



Contacts & Connectors



Stamping



AEROSPACE AND DEFENCE



AUTOMOTIVE



COMMUNICATIONS



ELECTRONICS



LIFE SCIENCES



MEDICAL



OPTICAL



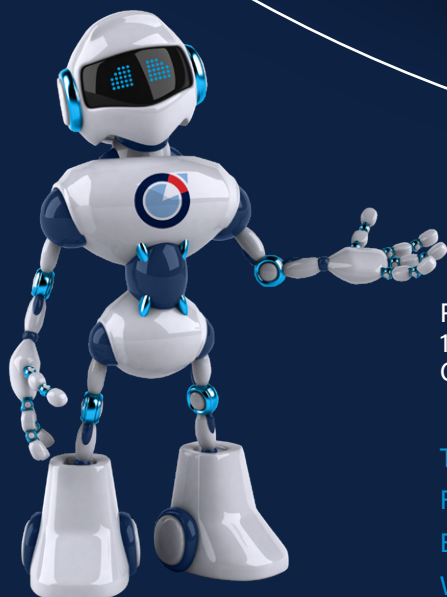
PRODUCT DEVELOPMENT



SCIENTIFIC



SECURITY



Photofab Ltd,
14 Cromwell Road, St Neots,
Cambs, PE19 2HP United Kingdom

T +44 (0)1480 226699
F +44 (0)1480 475801
E enquiries@photofab.co.uk
W photofab.co.uk

